

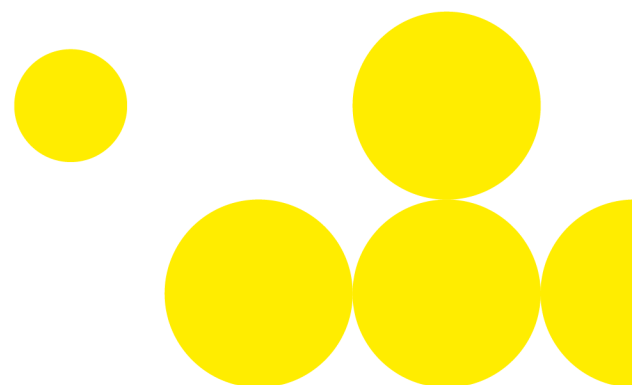
# Price list for Network Access in the market area THE

ONTRAS Gastransport GmbH



Transmission Pipeline of ONTRAS

Valid from 01 January 2023



## 1. Calculation of the Capacity Charge

The payable Capacity Charge is the result of following formulas for each specific capacity.

a) For freely allocable capacity (FZK):

Yearly, quarterly, monthly and daily capacity: 
$$E = K \cdot \frac{d}{d_j} \cdot s \cdot f_{uj} \cdot R$$

Within-Day: 
$$E = K \cdot \frac{h}{h_j} \cdot s \cdot f_{uj} \cdot R$$

b) For firm dynamically allocable capacities (DZK and DZK1 to 5) and for conditional firm, freely allocable capacities (bFZK):

Yearly, quarterly, monthly and daily capacity: 
$$E = K \cdot \frac{d}{d_j} \cdot s \cdot f_{uj} \cdot R \cdot 0.8$$

Within-Day: 
$$E = K \cdot \frac{h}{h_j} \cdot s \cdot f_{uj} \cdot R \cdot 0.8$$

c) For interruptible capacity:

Yearly, quarterly, monthly and daily capacity: 
$$E = K \cdot \frac{d}{d_j} \cdot s \cdot f_{uj} \cdot R \cdot f_{utb}$$

Within-Day: 
$$E = K \cdot \frac{h}{h_j} \cdot s \cdot f_{uj} \cdot R \cdot f_{utb}$$

Variable	Definition
$E$	... Capacity charge in EUR
$K$	... Capacity in kWh/h
$d$	... Contract period in days
$d_j$	... Days of calendar year (standard year: 365; leap year: 366)
$h$	... Contract period in hours
$h_j$	... Hours of calendar year (standard year: 8,760; leap year: 8,784)
$s$	... Seasonal factors for storage network points (see point 3) or $s = 1$ for any other type of network point
$f_{uj}$	... Short-term multipliers (see point 2)
$R$	... Standard Capacity Charge in EUR/kWh/h/a (see annex)
$f_{utb}$	... Discount factor for interruptible capacity (see annex)

## 2. Short-term multipliers

(in accordance with Ordinance BK9-18-608 from 29.03.2018 and BK9-19-612 from 27.05.2020 of the Bundesnetzagentur)

Contract period in days		Type	Short-term multiplier $f_{ij}$
from	until		
0	1	Within-Day	2.0
1	27	Day	1.4
28	89	Month	1.25
90	364	Quarter	1.1
365	$\infty$	Year	1.0

## 3. Seasonal factors for storage network points

For periods of less than a year seasonal factors are applied for storage network points on monthly base. These can be found in the following table:

Direction	Jan Feb   Mar	Apr   May   Sep Oct   Nov   Dec	Jun   Jul Aug
	s		
Entry	0.5	1.0	1.5
Exit	1.5	1.0	0.5

## 4. Biogas redistribution levy

At all *network connection points* and *commercial exit zones*, as listed in the annex, an additional biogas redistribution levy of 0.6983 EUR/kWh/h/a will be added. This levy will be charged in addition to the regulated capacity tariff under Section 1 and the gas quality conversion fee under Section 5.

The short-term multipliers under Section 2 are not applicable to this levy.

## 5. Gas Quality Conversion Fee

At all *network connection points* and *commercial exit zones*, as listed in the annex, an additional gas quality conversion fee of 0.7547 EUR/kWh/h/a will be added. This levy will be charged in addition to the regulated capacity tariff under Section 1 and the biogas redistribution levy under Section 4.

The short-term multipliers under Section 2 are not applicable to this fee.

## 6. Tariff for the Alternative Nomination Procedure

The balancing group manager shall pay the following charges for the Alternative Nomination Procedure. Contractual details can be found in Section 5 of the Supplementary Terms and Conditions of Trade of ONTRAS.

### a) One-off set-up charge

Service	Charge in EUR
Setting-up per balancing group contract	2,000.00

### b) Monthly charge

Service	Charge in EUR
Operation charge per balancing group contract	1,000.00

## 7. Contractual penalty in case of harmful nomination behaviour in accordance with Section 12 No 14 General Terms and Conditions of Trade for the Entry and Exit Contract

The price for penalty will be calculated based on the volume based average price for the balancing energy on respective gas day, which is published by the market area manager on his website.

# Annex: entry and exit tariffs for firm and interruptible capacity

## 1. Tariffs for entry capacities (without storages)

Entry points	Network point-ID   Marktklokations-ID		Standard Capacity Charge (R) EUR/kWh/h/a	Discount factor for interruptible capacity <sup>3</sup> (f <sub>utb</sub> )	
				Y, Q, M	D, WID
<b>Cross border points</b>					
GCP GAZ-SYSTEM/ONTRAS	12967		6.03	0,80	0,80
Lubmin II	8001		6.03	0,80	0,79
<b>Biogas entry points</b>					
BGA Altenhof	6073	10112099536	0.00	0,80	0,80
BGA Barleben	6009	10112099453	0.00	0,80	0,80
BGA Dargun	5798	10112099411	0.00	0,80	0,80
BGA Forst	6117	10112099445	0.00	0,80	0,80
BGA Gordemitz	6010	10112099940	0.00	0,80	0,80
BGA Gröbern	6116	10112099338	0.00	0,80	0,80
BGA Gröden	6011	10112099388	0.00	0,80	0,80
BGA Güstrow	5731	10112099495	0.00	0,80	0,80
BGA Haßlau	5830	10112099346	0.00	0,80	0,80
BGA Jabel	6097	10112099461	0.00	0,80	0,80
BGA Kodersdorf	6129	10112099487	0.00	0,80	0,80
BGA Lehma	6004	10112099362	0.00	0,80	0,80
BGA Leizen	6012	10112099403	0.00	0,80	0,80
BGA Neuburg-Steinhausen	6096	10112099429	0.00	0,80	0,80
BGA Neudorf	6013	10112099528	0.00	0,80	0,80
BGA Sachsendorf	6014	10112099437	0.00	0,80	0,80
BGA Satuelle	6015	10112099354	0.00	0,80	0,80
BGA Schöpstal	5827	10112099479	0.00	0,80	0,80
BGA Stralsund	6016	10112099510	0.00	0,80	0,80
BGA Thierbach	6130	10112099396	0.00	0,80	0,80
BGA Thronitz	6017	10112099502	0.00	0,80	0,80
BGA Wolfshagen	6098	10112099320	0.00	0,80	0,80
BGA Zernin	6039	10112099370	0.00	0,80	0,80
PTG-Anlage Falkenhagen (H2)	6081	10112099544	0.00	0,80	0,80
PTG-Anlage Falkenhagen (SNG)	6180	10112099916	0.00	0,80	0,80
PTG-Anlage Prenzlau	6119	10112099552	0.00	0,80	0,80
<b>Downstream-upstream flow points</b>					
NKP-Zone NBB Rückspeisung Biogas	6085		0.00	0,80	0,80
NKP-Zone E.DIS Rückspeisung Biogas	6090		0.00	0,80	0,80
<b>Other entry points</b>					

<sup>1</sup> For contracts starting from 1 November 2018, available capacities of the network point will be marketed at the VIP Brandov. However, this network point will remain in the price list until the expiration of the existing capacity contracts.

<sup>3</sup> The factor applies to the product types Year (Y), Quarter (Q), Month (M), Day (D) and Within-Day (WID)

## 2. Tariffs for exit capacities (without storages)

Exit points	Network point-ID   Markttlokations-ID		Standard Capacity	Discount factor	Metering
			Charge (R)	for interruptible capacity <sup>3</sup> (f <sub>utb</sub> )	operation charge <sup>2</sup>
			EUR/kWh/h/a	Y, Q, M, D, W/D	EUR/d
<b>Cross border points</b>					
Deutschnudorf <sup>1</sup>	12304		6.03	0,79	-
Deutschnudorf EUGAL Brandov <sup>1</sup>	8002		6.03	0,79	-
GCP GAZ-SYSTEM/ONTRAS	12967		6.03	0,80	-
<b>Network connection points</b>					
NAP Ahrensfelde	5789	10112099578	6.03	0,80	70,90
NAP Bernburg	1176	10112099586	6.03	0,80	35,45
NAP Bitterfeld GuD	2493	10112099594	6.03	0,80	17,72
NAP Chemnitz	6133	10112099601	6.03	0,80	17,72
NAP Coswig II	1466	10112099619	6.03	0,80	17,72
NAP Dallmin	6108	10112099627	6.03	0,80	17,72
NAP Dresden	1429	10112099635	6.03	0,80	35,45
NAP Eigenverbrauch UGS Buchholz	5773	10112099924	6.03	0,80	53,17
NAP Eisenhüttenstadt Zone	41002	10112099651	6.03	0,80	35,45
NAP Elsnigk	6154	10112099669	6.03	0,80	17,72
NAP Frömmstedt	887	10112099677	6.03	0,80	17,72
NAP Gräfenhainichen	672	10112099685	6.03	0,80	17,72
NAP Güstrow	6237	10112099958	6.03	0,80	17,72
NAP Halle Zone	6168	10112099693	6.03	0,80	124,07
NAP Hennigsdorf II	1131	10112099700	6.03	0,80	35,45
NAP Kirchmöser	1275	10112099726	6.03	0,80	17,72
NAP Lenz	1726	10112099734	6.03	0,80	17,72
NAP Ludwigsfelde	6099	10112099742	6.03	0,80	53,17
NAP Marienehe	5266	10112099750	6.03	0,80	35,45
NAP Melamine Piesteritz	6000	10112099768	6.03	0,80	17,72
NAP Merseburg	41041	10112099776	6.03	0,80	35,45
NAP Mosel	36	10112099784	6.03	0,80	17,72
NAP Obertopfstedt	885	10112099792	6.03	0,80	17,72
NAP Piesteritz	5760	10112099809	6.03	0,80	35,45
NAP Radsystem Mosel	5832	10112099817	6.03	0,80	17,72
NAP Salzwedel	5120	10112099825	6.03	0,80	35,45
NAP Sandersdorf	6195	10112099932	6.03	0,80	53,17
NAP Schwarze Pumpe II	6042	10112099833	6.03	0,80	35,45
NAP Schwarzheide II	1040	10112099859	6.03	0,80	17,72
NAP Schwerin Zone	5802	10112099718	6.03	0,80	106,35
NAP Thyrow	5791	10112099867	6.03	0,80	70,90
NAP Torgau	5009	10112099875	6.03	0,80	35,45
NAP Wolfen Areal A	5582	10112099883	6.03	0,80	35,45
NAP Wolfen II	1869	10112099891	6.03	0,80	17,72
NAP Wolfen Kraftwerk	5581	10112099908	6.03	0,80	17,72
<b>Commercial exit zones</b>					
NKP-Zone Avacon HDN	41010		6.03	-	-
NKP-Zone DOW Böhlen	6123		6.03	-	-
NKP-Zone ING Schkopau	6124		6.03	-	-
NKP-Zone E.DIS	41013		6.03	-	-
NKP-Zone EMS	41009		6.03	-	-
NKP-Zone EV Schwarze Elster	41026		6.03	-	-
NKP-Zone EVIP	6030		6.03	-	-
NKP-Zone EWA	41028		6.03	-	-
NKP-Zone EWE Netz	41029		6.03	-	-
NKP-Zone EWE Wendorf	6057		6.03	-	-
NKP-Zone Ferngas Netzgesellschaft	41024		6.03	-	-
NKP-Zone GV Eisenhüttenstadt	6044		6.03	-	-
NKP-Zone GV Görlitz	41039		6.03	-	-
NKP-Zone GV Vorpommern Netz	5718		6.03	-	-
NKP-Zone GV Zehdenick	6145		6.03	-	-
NKP-Zone Halle Netz	41025		6.03	-	-
NKP-Zone HanseGas	41019		6.03	-	-
NKP-Zone inetz	41022		6.03	-	-
NKP-Zone InfraLeuna	6158		6.03	-	-
NKP-Zone ISB Arneburg	6045		6.03	-	-
NKP-Zone Köthen Energie Netz	5084		6.03	-	-
NKP-Zone MITNETZ Gas 1	41042		6.03	-	-
NKP-Zone MITNETZ Gas 2	41043		6.03	-	-
NKP-Zone MITNETZ Gas HD	6126		6.03	-	-
NKP-Zone NBB 1	41003		6.03	-	-
NKP-Zone NBB 2	41077		6.03	-	-
NKP-Zone NBB 4	6074		6.03	-	-
NKP-Zone Netz Leipzig	41065		6.03	-	-
NKP-Zone Netzgesellschaft Potsdam	41031		6.03	-	-
NKP-Zone NG Schwerin	41027		6.03	-	-
NKP-Zone PVU	41051		6.03	-	-
NKP-Zone Redinet Zeitz	41073		6.03	-	-
NKP-Zone SachsenNetze HS.HD Zone	41034		6.03	-	-
NKP-Zone SÜW Lübben	6047		6.03	-	-
NKP-Zone SÜW Luckau-Lübbenau	41064		6.03	-	-
NKP-Zone SW Bernau	41057		6.03	-	-
NKP-Zone SW Burg Energienetze	6050		6.03	-	-
NKP-Zone SW Döbeln	6051		6.03	-	-
NKP-Zone SW Finsterwalde	41060		6.03	-	-
NKP-Zone SW Freiberg	41032		6.03	-	-
NKP-Zone SW Greifswald, Greifswald	6056		6.03	-	-
NKP-Zone SW Greifswald, Grimmen	6084		6.03	-	-
NKP-Zone SW Güstrow	41061		6.03	-	-

Exit points	Network point-ID   Marktlokations-ID	Standard Capacity Charge (R)	Discount factor for interruptible capacity ( $f_{utb}$ )	Metering operation charge <sup>2</sup>
		EUR/kWh/h/a	Y, Q, M, D, WID	EUR/d
NKP-Zone SW Haldensleben	41062	6.03	-	-
NKP-Zone SW Ludwigsfelde	6122	6.03	-	-
NKP-Zone SW Lutherstadt Wittenberg	41071	6.03	-	-
NKP-Zone SW Magdeburg	41066	6.03	-	-
NKP-Zone SW Neustrelitz	5126	6.03	-	-
NKP-Zone SW Ribnitz-Damgarten	6052	6.03	-	-
NKP-Zone SW Riesa	41067	6.03	-	-
NKP-Zone SW Rostock	41068	6.03	-	-
NKP-Zone SW Sangerhausen	6147	6.03	-	-
NKP-Zone SW Senftenberg	6054	6.03	-	-
NKP-Zone SW Spremberg	41069	6.03	-	-
NKP-Zone SW Stendal	41070	6.03	-	-
NKP-Zone SW Wittenberge	6053	6.03	-	-
NKP-Zone SW Zittau	41072	6.03	-	-
NKP-Zone SWS Netze	5803	6.03	-	-
NKP-Zone TEN	41056	6.03	-	-
NKP-Zone TW Naumburg	61009	6.03	-	-
NKP-Zone VB Hoyerswerda	6055	6.03	-	-
NKP-Zone ZEV	41075	6.03	-	-

<sup>1</sup> For contracts starting from 1 November 2018, available capacities of the network point will be marketed at the VIP Brandov. However, this network point will remain in the price list until the expiration of the existing capacity contracts.

<sup>2</sup> The metering operation charge is payable, if ONTRAS is metering point operator. Please see details in section 23 of the Terms and Conditions of Trade of ONTRAS.

<sup>3</sup> The factor applies to the product types Year (Y), Quarter (Q), Month (M), Day (D) and Within-Day (WID)

### 3. Tariffs for entry capacities at storages (UGS)

Storage network point	Network point-ID	Standard Capacity Charge (R)	Discount factor for interruptible capacity ( $f_{utb}$ )
		EUR/kWh/h/a	
UGS Kraak	2564	1.5075	0,80
UGS Peckensen	1322	1.5075	0,80
UGS Staßfurt	61004	1.5075	0,80
VGS Storage Hub	4290	1.5075	0,80

### 4. Tariffs for exit capacities at storages (UGS)

Storage network point	Network point-ID	Standard Capacity Charge (R)	Discount factor for interruptible capacity ( $f_{utb}$ )
		EUR/kWh/h/a	
UGS Allmenhausen	6105	1.5075	0,80
UGS Kraak	2564	1.5075	0,80
UGS Peckensen	1322	1.5075	0,80
UGS Staßfurt	61004	1.5075	0,80
VGS Storage Hub	4290	1.5075	0,80