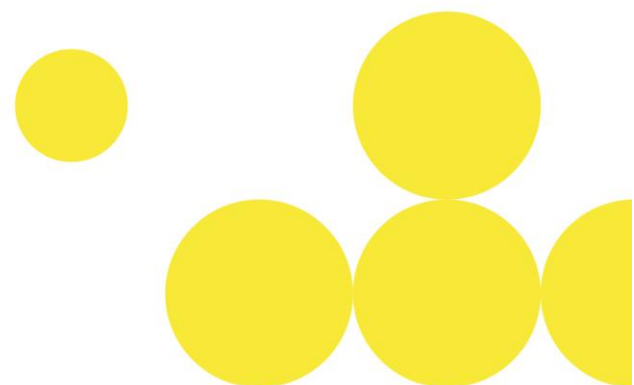
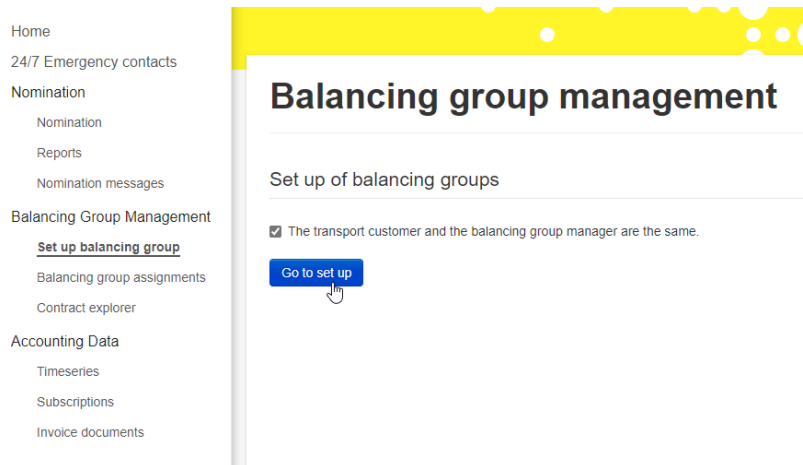


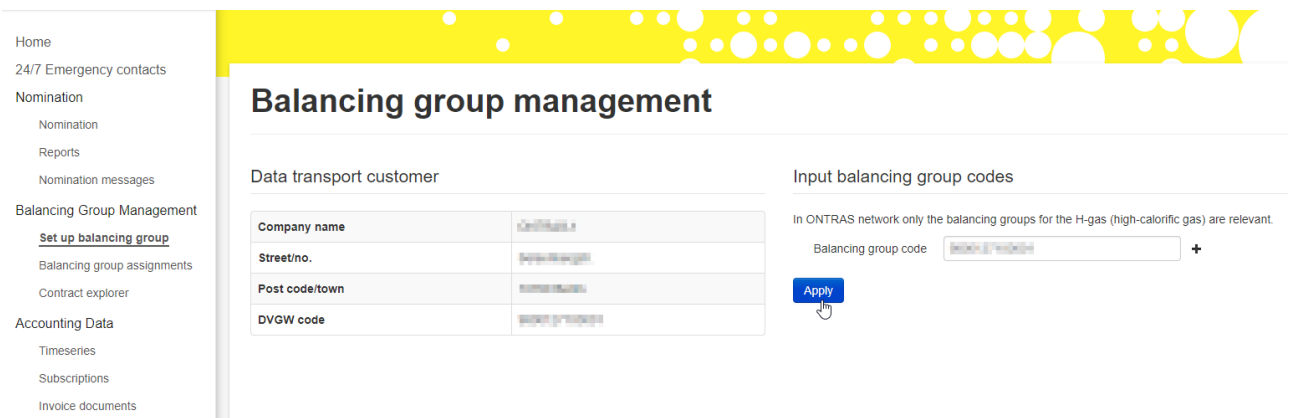
Guideline for the change of the capacity allocation via the ONTRAS customer portal



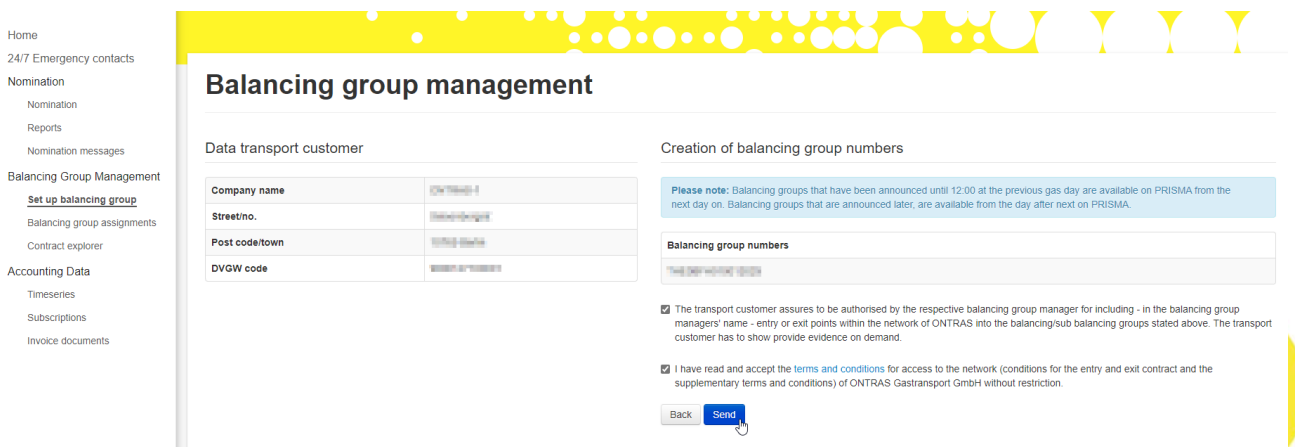
Step 3: In the next step, it can be confirmed that the shipper and the balancing group manager are the same, if this is the case. If this is not the case, the DVGW number of the balancing group manager must be entered.



Step 4: The balancing group code now needs to be entered. It is also possible to enter additional balancing group codes using the "Plus" symbol. The data must be confirmed using the "Apply" button.



Step 5: The new balancing group(s) can be transmitted to ONTRAS via the "Send" button. For this, the ONTRAS network access conditions must be confirmed.



- Home
- 24/7 Emergency contacts
- Nomination
 - Nomination
 - Reports
 - Nomination messages
- Balancing Group Management
 - Set up balancing group
 - Balancing group assignment**
 - Contract explorer
- Accounting Data
 - Timeseries
 - Subscriptions
 - Invoice documents

Balancing Group Contract

← Back

Balancing Group Code THROBPH10H1001	Runtime 01.01.2024 - 31.12.2024 (ongoing)
Balancing Group Manager ONTRAS	Balancing Group Type -

Contributions

✎ In this view, all current and future capacity bookings that have been brought into this balancing group are displayed. Please select the capacity contract for which you would like to make a change to the contribution.

✕ 🔍

Capacity Contract	Interruptibility	Net Point	Capacity kWh/h	Runtime	
0000001	Yes	Center	100	01.01.2024 - 31.12.2024	
0000001	Yes	0000 (Performance)	100	01.01.2024 - 31.12.2024	

After pressing the button, an assistant opens. The capacity and the period for changing the balancing group assignment can be defined here. The input is confirmed by using the "Continue" button.

Balancing Group Contract

← Back

Change contribution for balancing group **THROBPH10H1001**

Step 1/3

i Please select a period and the capacity of the new contribution.

Old Balancing Group Contract
THROBPH10H1001

Capacity (kWh/h)

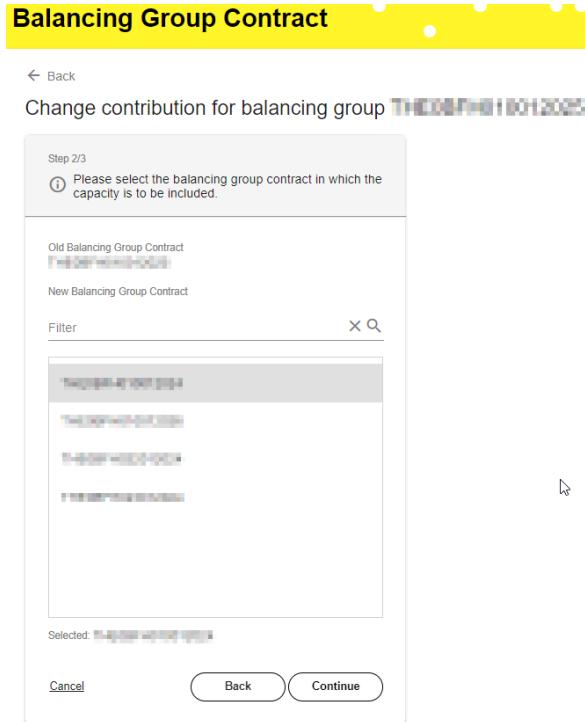
Valid from
 📅

Valid to
 📅

Cancel

Back
Continue

Step 4: In the next step, you can select the balancing group into which the capacity should be allocated.



Step 5: Click on "Confirm changes" to finalise the balancing group assignment.

